



SLEEPSAFE

SMOKE ALARM



SMOKE ALARM USER'S MANUAL BS EN 14604:2005

Please Read Carefully and Store in a Safe Place

WARRANTY

Arctic Hayes Limited guarantees the SleepSafe® Smoke Alarm for a period of three years from the date of manufacture, to be free from defects in materials and workmanship.

Provided it occurs under normal use and service, we will during this period, repair or replace any units found to be defective in materials or workmanship.

Arctic Hayes Limited will be under no obligation to repair or replace units found to be defective due to damage, misuse, neglect, unreasonable use or found to have been dismantled or tampered with.

Should a problem arise with the alarm, please contact the Arctic Hayes helpline on +44 (0)113 271 5245 sales@arctic-hayes.com

Arctic Hayes Ltd
9 Millshaw Park Ave | Leeds
LS11 0LR | United Kingdom
sales@arctic-hayes.com
www.arctic-hayes.com
+44(0)113 271 5245

Arctic Hayes Ltd
Ipcó B.V., Spinel 400
3316 LG Dordrecht
The Netherlands
info@arctic-hayes.eu
+44(0)113 271 5245

INTRODUCTION

Thank you for purchasing this alarm, designed to detect and alert the user to the presence of smoke caused by smouldering fires. This user's manual contains information on the operation and installation of the alarm. Please take a few moments to read the manual carefully, and store in a safe place for future reference.

GENERAL INFORMATION

This Smoke Alarm uses photoelectric or optical technology which is generally more sensitive than standard ionization technology at detecting large particles produced by smouldering fires (eg those started by cigarettes). Smouldering fires can burn for hours before producing flames, so early detection via a photoelectric alarm allows a greater time frame for residents to evacuate to a safe place. The Smoke Alarm unit monitors the air, sounding an audible alarm when smoke reaches the sensing chamber. This unit can only provide an early warning of developing fires if it is installed, maintained and located where smoke can reach it and where all residents can hear it, as described in this manual. The unit will NOT sense gas, heat or flame. It cannot prevent or extinguish fires and will not alert hearing impaired residents

TESTING YOUR ALARM CAUTION:

Due to the loudness (85 decibels) of the alarm, stand an arm's length away from the unit when testing. It is important to test this unit every week to ensure it is working correctly. To test, press and hold the test button on the cover of the unit until the alarm sounds (the alarm may continue for a few seconds after the button is released). The alarm sequence consists of a repeating pattern: 3 beeps, pause, 3 beeps, pause. If the alarm does not sound, check to see if the unit is receiving power and test again. If the alarm still does not sound, replace the unit immediately.

We recommend using the SleepSafe® Smoke Alarm Tester.

Designed to simulate smoke, just spray the aerosol at your smoke alarm to check the sensor is functioning correctly.

Contains approx 40 tests per 140ml can.
Order Code PH043A

USING THE ALARM

Single Button Test/Silence eliminates confusion. Depending on the mode the alarm is in, pushing this button provides one of the following functions;

- test the alarm
- silence the alarm
- re-test the alarm when in silence mode
- clear the memory feature

The Test button electronically simulates the presence of smoke and causes the unit to enter alarm mode. This sequence tests the unit's electronics, battery and horn to ensure proper operation.

The horn is piezoelectric and is rated at 85 decibels at 3 metres (10 feet). In a smoke incident, the horn will sound a repetitive sequence of three beeps, a pause, three beeps, a pause.

The Low Battery Warning consists of a brief alarm chirp every 30-40 seconds for a minimum of seven days.

The unit flashes a red LED every 30-40 seconds to indicate the alarm is receiving power.

The Memory feature is automatically triggered after the alarm has been activated by smoke particles. Once the smoke particles have dropped back down to a safe level, the alarm will stop. The Memory feature advises that the alarm has been triggered by displaying a red LED which will flash on for 2 seconds/off for 2 seconds repeatedly. This feature helps emergency responders, investigators or service technicians identify which units in your home were exposed to alarm levels of smoke after the situation has subsided. The memory alarm indicator remains ON until it is reset by pressing the Test/Silence button. The Memory Alarm Indicator is also reset when power is removed from the alarm.

The alarm includes 2 screws for easy installation on the ceiling. Improved UV resistance keeps the alarm housing from discolouring over time. A dust cover is also included to protect the unit during decorating and construction work of the surrounding area.

GENERAL MAINTENANCE OF ALARM

To keep your Smoke Alarm in good working order, please follow these simple steps:

- Verify the unit's alarm and LED light operation by pushing the test button once a week.
- Remove dust and dirt from the alarm cover once a month using a dry cloth.
- Never use detergents or other solvents to clean the unit.

- Avoid spraying air fresheners, hair spray or other aerosols near the alarm, as propellents may damage the sensor.
- Do not paint the unit. Paint will seal the vents and interfere with the sensor's ability to detect smoke.
- Never attempt to disassemble the unit and clean inside. This action will void your warranty.

We recommend using the PH Blow Pipe Air Duster.

To clean the interior of the alarm this can be sprayed through the gaps and around the perimeter of the alarm.

Order Code PH029 (150ml) or PH0294 (400ml)
Alternatively, use a vacuum cleaner around the alarm casing to remove build-up of particles that may affect the performance of the sensor.

SPECIFICATION

Power Supply:	DC9V battery.
Standby Current:	<12uA
Alarm Current:	<15mA
Temp Range:	-10°C (14°F) to 60°C (140°F)
Humidity Range:	<95%RH (40 ± 2°C).
Alarm:	85 Db at 3m (10ft)
Protection Area:	6m high, 60m².
Certification:	EN14604:2005

RECOMMENDED INSTALLATION LOCATIONS

In single family residences, it is recommended that one smoke alarm is installed on each floor and in every bedroom/sleeping area. In newly constructed housing, smoke alarms must be DC powered and interconnected. For additional coverage, it is recommended that you install a smoke alarm in all rooms, halls, storage areas, finished attics and basements, where temperatures normally remain between -10°C to 60°C. Make sure no door or other obstruction could keep smoke from reaching the smoke alarms. If a hall is longer than 12 metres long, install a unit at each end. Install units at the top of stairways, or the bottom of basement stairways.

Continued overleaf >

WHERE NOT TO INSTALL

For best performance, avoid installing smoke alarms in these areas:

Where combustion particles are produced. Combustion particles form when something burns. Areas to avoid include poorly ventilated kitchens, garages and furnace rooms. Keep units at least 6 metres (20ft) from the sources of combustion particles (stove, furnace, water heater, space heater) if possible.

In areas where a 6 metre (20ft) distance is not possible (in modular, mobile or smaller homes for example) it is recommended the smoke alarm be placed as far from these fuel-burning sources as possible. Keeping the alarm at a reasonable distance from a fuel-burning source reduces false alarms. Ventilate these areas as much as possible.

In air streams near kitchens. Air currents can draw cooking smoke into the sensing chamber of a smoke alarm near the kitchen.

In very damp, humid or steamy areas, or directly near bathrooms with showers. Keep units at least 3 metres (10ft) away from showers, saunas dishwashers etc.

Where the temperatures are regularly below -10°C (14°F) or above 60°C (140°F), including unheated buildings, outdoor rooms, porches or unfinished attics or basements.

In very dusty, dirty or greasy areas. Do not install a smoke alarm directly over the stove or range. Clean a laundry room unit frequently to free it of dust or lint.

Near fresh air vents, ceiling fans or in very drafty areas. Drafts can blow smoke away from the unit, preventing it from reaching sensing chamber.

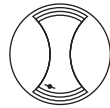
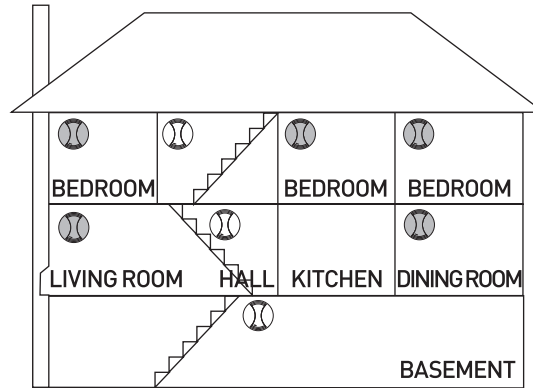
In insect infested areas, insects can clog openings to the sensing chamber and cause unwanted alarms.

Less than 305mm (12 inches) away from fluorescent lights. Electrical "noise" can interfere with the sensor.

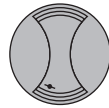
In "dead air" spaces. "Dead air" spaces may prevent smoke from reaching the smoke alarm.

Less than 102mm (4") from the peak of an 'A' frame type ceiling.

Recommended layout for existing homes (NOT for new build properties)



MINIMUM PROTECTION



RECOMMENDED FOR ADDITIONAL PROTECTION

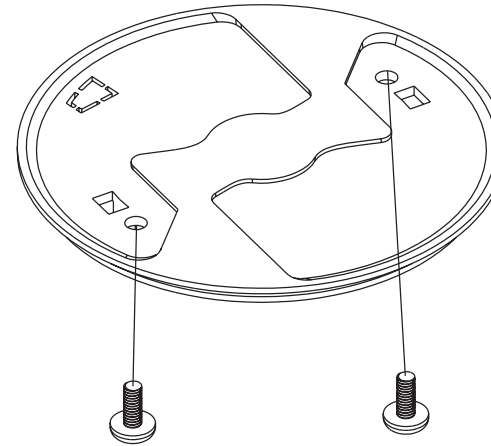
WARNING!

Your SleepSafe® Smoke Alarm can be installed into a new build property as additional protection to an existing smoke detection system only. It cannot be used as a substitute for a mains wired system. In new build properties, building regulations require alarms to be interlinked.

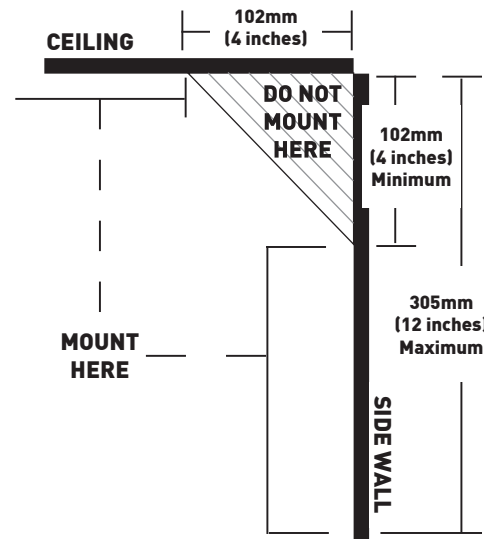
MOUNTING INSTRUCTIONS

1. Remove the mounting bracket from the back of the unit by twisting the unit and connect the battery to activate the alarm.
2. After selecting a suitable location for the alarm, drill two 5mm holes in the ceiling or wall using the mounting bracket as a guide and insert the plastic plugs (provided).
3. Attach the mounting bracket to the ceiling or wall using the screws provided.
4. Align the activated alarm to the mounting bracket and twist to secure.

MOUNTING PLATE



MOUNTING LOCATION



BATTERY REPLACEMENT

Caution: Your alarm is sealed and the cover is not removable. To replace the battery, remove the alarm from the mounting bracket, and replace with a good quality DC9V alkaline or carbon battery. Once the battery has been replaced, reinstall and test the alarm. This can be done by pressing the "Test" button and checking the red LED is flashing once every 30-40 Seconds.

DISPOSAL

The SleepSafe Smoke Alarm should not be disposed of with household waste. Please recycle where facilities exist. Check with your local authority for details of recycling/disposal methods in your area. Disconnect the battery before disposal. Do not attempt to open or burn the unit.

WHAT TO DO IF THE ALARM SOUNDS

- Don't panic, stay calm. Your safe escape may depend on thinking clearly.
- Notify everybody in the residence of the fire.
- Get out of the house as quickly as possible. Follow a planned escape route. Do not stop to get dressed or collect any belongings.
- Feel the doors to see if they are hot. If they are hot, do not open them – use an alternative escape route.
- Stay close to the floor. Smoke and hot gas rises.
- Cover your nose and mouth with a cloth (wet if possible). Take short, shallow breaths.
- Keep doors and windows closed. Open them only to use them as a means of escape.
- Meet at a planned location after leaving the house. Carry out a headcount of all residents.
- Call the Emergency Services/Fire Service on 999 as soon as possible from outside your house. If possible use a neighbour's phone or public phone rather than a mobile phone (your location can be traced from the number if the line is lost).
- Give your name and the address.
- Never go back inside the building until a member of the fire service has told you it is safe to do so.