

ARCTIC HAYES

HEAT ALARM

10 YEAR SEALED
WIRELESS INTERLINKED



HEAT ALARM
USER'S MANUAL
BS5446-2:2003

Please Read Carefully and Store in a Safe Place
Meets the requirements of 2022 Scottish legislation for
fire alarms in homes.

Suitable for BS 5839-6:2013 Grade F1 installations.

INTRODUCTION

Powered heat alarm. Heat alarm rapidly detects incremental temperature changes and alarms between 54°C to 70°C.

RECOMMENDED INSTALLATION LOCATIONS

We recommend the installation of a Heat Alarm in the following locations.

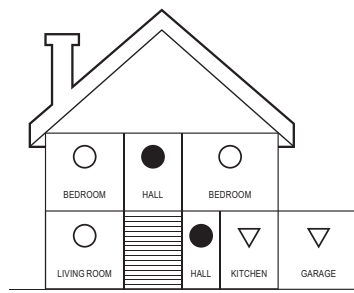
- The location must comply with the applicable building regulations. BS 5839-6:2013 gives guidance on the number, types and positioning of alarms. In general, smoke alarms should be installed in every circulation space such as hallways, landings, bedrooms and principal living spaces. Larger spaces may require the use of more than one unit.
- For best protection heat alarms should be installed as part of a complete fire protection system that has also includes smoke alarms. Heat alarms are best suited to areas such as kitchens, utility rooms and garages where dust, fumes and moisture can cause nuisance alarms in smoke detectors. Heat alarms should not be installed in escape routes instead of smoke alarms. They should only be used in the above applications and where possible be interlinked to smoke alarms.

- When heat alarms are installed in a room, they should be placed on the ceiling, ideally in the centre of the room. They should be at a distance no greater than 5.3m from the farthest wall no greater than 5.3m from a door to any room in which a fire might start and no greater than 5.3m from the next heat alarm.

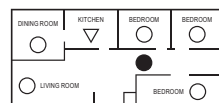
NOTE: Heat alarms should not be wall mounted.

- Closed doors and other obstructions will interfere with the path of heat to an alarm and may prevent occupants from hearing and alarm on the other side of a closed door. Install sufficient alarms to compensate for closed doors and obstacles.

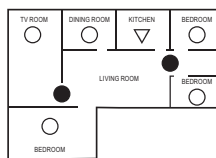
TWO STORY DWELING



SINGLE STOREY, ONE SLEEPING



SINGLE STOREY, TWO SLEEPING



- Smoke alarms for limited protection
- Additional smoke alarms for better coverage
- ▽ Heat alarms

WHERE NOT TO INSTALL

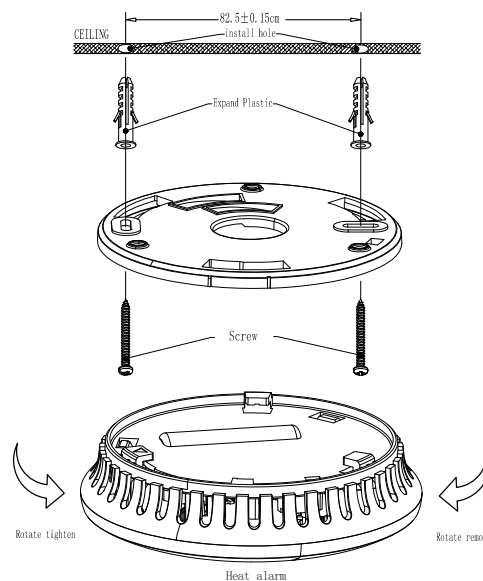
- In turbulent air from fans, heaters, doors, windows.
- In high humidity areas such as bathrooms and shower rooms or where temperature exceeds 39°C (100°F) or falls below 5°C (40°F).
- At the peak of an A Frame ceiling - dead air at the top may prevent heat from reaching the alarm to provide an early warning.
- Less than 300mm (12") from a wall when mounted on the ceiling.
- In very dusty or dirty areas - dirt and excessive dust can impair the performance of the alarm.
- Within 300mm (12") of a light fitting or room corners.
- In locations that would make routine testing or maintenance hazardous.

- On poorly insulated ceilings.
- Near objects such as ceiling decorations that might impede the path of heat to the alarm.
- Within 1500mm (5ft) of a fluorescent light fitting.

MOUNTING INSTRUCTIONS

- WARNING:** To prevent injury, this unit must be securely attached to the ceiling in accordance with the installation instructions.

INSTALLATION SKETCH MAP



HOW TO ACTIVATE

Press test button and hold it for above 3 seconds until LED lights with a "beep" and release it within 3 seconds, the unit will generate a "beep" again, indicates that it is activated and goes into work status.

WIRELESS INTERCONNECTING FUNCTION

- Ensure product activation is complete.
- Select one alarm (Heat / Smoke) as MASTER device. Treat all other devices as SECONDARY device.
 - Press the test button on the MASTER device three times within two seconds, the red LED will flash quickly, the device is now in send radio signal mode.
 - This mode will last for 90 seconds.
 - Repeat the above step 2 on all other SECONDARY devices these will then beep once to confirm interconnection.

CLEAR WIRELESS CONNECTION FUNCTION

Press the test button on any SECONDARY device three times within 2 seconds, the red LED will flash quickly, then press and hold the test button again until the red light goes out the first time and release the button immediately, the red LED will flash slowly, at this time, press the test button again, the SECONDARY device will beep 3 times, which means that the SECONDARY device clears wireless connection successfully.

CAUTION: Must activate alarm first, or else there is no function for this device. The heat alarm is designed to be wirelessly interlinked with up to 40 devices both Heat (HT10L) or Smoke (SM10L).

They are not designed to communicate with wireless alarms from other ranges or manufacturers. These alarms need to be interlinked in order to communicate with each other. If one alarm activates, all other interlinked alarms will also sound. Only successful interconnection devices can clear the radio signal.

Clearing the radio signal only removes the radio signal from the SECONDARY device. The MASTER device can't clear the radio signal. The (HT10L) Heat alarm can be interconnected with (SM10L) Smoke alarm.

TESTING THE ALARM

Test by pushing the test button on the cover. This will sound the alarm and checks if the electronic circuitry, alarm, and battery are working. If no alarm sounds, the device has defective batteries or other failures. DO NOT use an open flame to test your alarm, you could damage the alarm or ignite combustible materials and start a structure fire.

NOTE: Weekly testing is required.

NORMAL CONDITIONS

The red LED should flash every 48 seconds to show that the alarm is active.

ALARM CONDITIONS

When the alarm detects the high heat and sounds the audible alert, the red LED will flash one flash / second. The flashing LED and pulsating alarm will continue until the detected temperature becomes lower than 39°C

Please see reverse for further instructions.

LOW BATTERY MODE

IMPORTANT: Your heat alarm requires the battery to have sufficient capacity of power to operate correctly. Should your heat alarm enter a low battery condition the device will emit an audible chirp once approx every 48 seconds with light flash once. When this occurs you must replace the alarm immediately. Your heat alarm will continue to warn of this low battery condition for at least 30 days, however, failure to change the alarm after this time would mean your heat alarm may have sufficient power to alert you in a real life situation.

ALARM SILENCE FUNCTION

WARNING: Before using the alarm's silence feature, fully identify the source of the heat build up and make sure that the area is safe. To activate silence control push and release the test / silence alarm control button in the center of the alarm. The alarm will silence immediately and the red LED will blink approx every 8-10 seconds for the next 8 minutes. This feature is to be used only when a safe condition is known to exist.

Silence feature will silence the alarm for approx 8 minutes. A rapid rise in temperature will override the alarm control and cause the device to sound an alarm. After 8 minutes heat alarm will revert to normal operation. If the device still detects a dangerous situation the alarm will sound again.

If interlinked alarms are installed, the device that detects the high temperature or smoke, this sounds the alarm. This cannot be inadvertently silenced by the test / silence button of other devices. In this case all of the alarms will continue to sound for as long as a dangerous situation is detected or until the test / silence button of the initiating alarm is pressed.

If the alarm does not go into silence mode and continues to sound its alarm, the heat / smoke in the area is too high and a dangerous situation may exist - take emergency action.

NOTE:

- Press and release the silence button, the alarm sound will stop.
- Your alarm will silence and enter into a reduced sensitivity rest cycle for approx 8 minutes.
- During the reduced sensitivity reset cycle, the red LED will flash once every 8 seconds.
- Your alarm will automatically return to full sensitivity on completion of the reset cycle and the red LED will revert to flashing once every 48 seconds.

DANGER:

Never ignore any alarm ignoring the alarm may result in injury or death. If your smoke / heat alarm activates and your not absolutely certain of the source of the smoke / heat, evacuate immediately.

GENERAL MAINTENANCE

- In addition to weekly testing, the alarm requires periodic monthly cleaning to remove dust, dirt and debris.
- Use a vacuum cleaner with the soft brush, vacuum all sides and covers of heat alarm device.

NOTE:

Take care not to damage the NTC thermistor within the protection cage.

- This alarm has a low battery monitor which will cause the alarm to 'chirp' approx every 48 seconds and the red LED flash once at the same time for a minimum of thirty days when the battery gets low.
- If there is a defective battery or other failures, during the warranty period contact your retailer.

IMPORTANT: Do not attempt to remove the cover to clean inside, this will affect your warranty.

CAUTION:

- Heat detectors can reduce the likelihood of a disaster, but they cannot guarantee a 100% safety.
- To ensure your maximum security, please install all heat detectors exactly according to this manual.
- Keep the detector clean. Do not allow dust to accumulate and test them at least once a week.
- Replace them immediately if they are not working properly.

SPECIFICATION

Power Supply:	DC 3V (CR17450) Lithium battery 10 year(sealed for life)
Alarm Volume:	>85dB (A) at 3 meters
Alarm Sensitivity:	54°C - 70°C
Silence Time:	Approx 8 minutes
Radio:	Interlink up to 40 devices
Overall Product Life:	10 years from purchase
Certification:	BS 5446-2:2003
Sound Pattern:	ISO8201 (BI 0.5s - pause BI 0.5s - pause - BI 0.5s - pause - 1.5s, with the RED LED flash, repeated this alarm pattern)
Wireless Sound Pattern:	BI-BI - pause 1.2s, with the red LED flash, repeat this alarm pattern
Usage:	Suitable for BS 5839-6: 2019 Grade F1 Installations

Max 40 x interlinked Smoke/Heat units per circuit

Meets the requirements of 2022 Scottish legislation for fire alarms in homes

Suitable for installations complying to BS 5839-6 Grade F1.

DISPOSAL

Waste electrical products should not be disposed of with regular household waste. Please recycle where facilities exist. Check local requirements for disposal of lithium battery electronic devices.

10 YEAR LIMITED WARRANTY

Arctic Hayes Ltd warrants that for a period of ten years from the date of purchase, this product will be free from defects in material and workmanship.

Arctic Hayes Ltd, as its sole discretion, will repair or replace this product, or any component of the product, found to be defective during the warranty period.

Replacement will be made with a new or remanufactured product or component, provided it is returned with postage pre-paid and proof of purchase. If the product is no longer available, replacement may be made with similar product of equal or greater value.

This is your exclusive warranty. This warranty is valid for the original retail purchaser from the date of initial retail purchase and is not transferable.

We may be able to resolve any issues quickly over the phone and avoid lengthy return times.

Arctic Hayes Ltd will be under no obligation to repair or replace units found to be defective due to damage, misuse, neglect, unreasonable use or found to have been dismantled or tampered with.

Should a problem arise with the alarm, please contact the Arctic Hayes helpline on +44(0) 113 271 5245 or sales@arctic-hayes.com



Arctic Hayes Ltd
9 Millshaw Park Ave | Leeds
LS11 0LR | United Kingdom
sales@arctic-hayes.com
www.arctic-hayes.com
+44(0)113 271 5245

Arctic Hayes Ltd
Ipcos B.V., Spinel 400
3316 LG Dordrecht
The Netherlands
info@arctic-hayes.eu
+44(0)113 271 5245