

ARCTIC
HAYES

NEW PRODUCT
CATALOGUE 2023



9 Millshaw Park Ave
Leeds, LS11 0LR
www.arctic-hayes.com
Call us on: +44[0]113 271 5245

CONTENTS

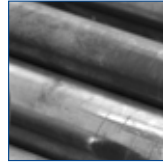
TRAPPEX FILTERS



Domestic
Commercial
Industrial

Page: 4 - 12
Page: 14 - 15
Page: 18

PIPE FREEZE



Pro
Electric

Page: 20
Page: 22-26

SMOKE PRODUCTS



Smoke Kit

Page: 28

AEROSOLS, GREASE & SOLUTIONS



Aerosols
Leak Detection
Grease
Solvents

Page: 30
Page: 31 - 32
Page: 33
Page: 33

SOLDERING & BRAZING



Soldering & Brazing Kits

Page: 36-38

SERVICING TOOLS & ESSENTIALS



Servicing Tools
Servicing Essentials

Page: 40-42
Page: 43-44

TESTING EQUIPMENT



Temperature
Gas & Pressure
Electrical

Page: 46 - 54
Page: 56
Page: 58 - 62

CLEANING PRODUCTS



Wipes
Rubble Sacks

Page: 64
Page: 65

CHECK OUT OUR WEBSITE!

Find out Frequently Asked Questions

With over 450 products available

News, reviews and information

NEW Freeze Selector, which freeze is best for you!

Partnership opportunities

Product images

Download safety data sheets

Watch how-to-use videos

Full product information

www.arctic-hayes.com



TRAPPEX

**DOMESTIC
PRODUCTS**

CENTRAMAG 22 & 28MM NYLON FILTER

Easy in-line installation is the key factor of the new Centramag 2, constituting to multiple installation options, added with the new 9 dirt separators to ensure protection against harmful debris entering the boiler. With a added bonus of 2 year manufacturers warranty and a 10 year magnet warranty.

- **CODE: TRAPCMAG2** - 22mm
- **CODE: TRAPMAG28** - 28mm

KEY FEATURES

- In line installation
- Multiple installation options
- Can be fitted within 60 seconds after draining and cutting the pipework
- 9 dirt separators -maximising non-magnetic capture
- Bi-directional flow
- Triple seal isolating valves
- Compact installations
- Air vent doubles up as a dosing port for chemical inhibitor
- High grade EPDM seals
- Quick release magnet for rapid service
- Controlled flow within the filter
- Maximum 3 bar pressure
- Maximum operating temp 100°C
- 10 year magnet warranty
- 2 year warranty



22MM GENESIS BRASS FILTERS

Designed for installation in small or restricted access areas. With the in-line system filter it is easy to install and fast and convenient to clean. With the aid of triple radial high performance EPDM seals. Manufactured from high quality robust brass. Can be fitted horizontally and vertically comes with a 25 year warranty.

• **CODE: TRAPGEN-WOV** - Without valves

• **CODE: TRAPGEN-WV** - With valves



KEY FEATURES

- Built in slip socket
- Robust brass body
- Triple radial seal
- Low level plug and drain valve provided
- Fits at a 50 degree angle
- Compact installation
- Captures magnetic and non-magnetic particles captured
- Fits horizontal, vertical and at angles
- Easy clean without disassembly
- 10000 gauss neodymium magnet
- Lidless unit, no need to replace seal
- Maximum 10 bar pressure
- Maximum operating temp 100°C
- 25 year warranty

22MM QUANTUM MINI BRASS FILTER

For use in compact areas, we have designed a precise and powerful magnetic filter, to fit where other's do not. Comes with a 25 year warranty.

• **CODE: TRAPQUAN22**

KEY FEATURES

- Built in slip socket
- Incorporated valves at no extra cost
- Triple radial seal
- Low level plug and drain valve
- Compact installation
- Captures magnetic and non-magnetic particles
- Fits at various angles
- Easy clean without disassembly
- 10000 gauss neodymium magnet
- Lidless unit, no need to replace seals
- Maximum 10 bar pressure
- Maximum operating temp 100°C
- 25 year warranty



15 & 22MM ELECTROLYTIC SCALE REDUCERS

Uses electrolytic principles to prevent the build-up of scale throughout the home, and remains effective over many years dependent on water usage. It works by altering the structure of the hardness salts.

• **CODE: TRAPSCALE15** - 15mm

• **CODE: TRAPSCALE22** - 22mm

KEY FEATURES

- WRAS approved
- Whole house protection
- Durable nickel plated unit
- Additional hexagon supports at both ends to make installation easier
- No maintenance or chemicals required
- No earth bonding required
- Maximum 10 bar pressure
- Maximum operating temp 80°C
- 1 year warranty



15MM MAGNETIC SCALE REDUCER

Ideal for single use appliances without the use of any chemicals. Compact and easy to install with compression fittings. Economical solution for anti-scale prevention with no running costs once fitted.

• **CODE: TRAPMAGSCAL15**

KEY FEATURES

- Strong magnet
- Effective treatment for cold water
- No moving parts
- Ideal for combi boilers
- Prolongs appliance life
- Maximum 10 bar pressure
- Maximum operating temp 80°C
- 1 year warranty





POWER FLUSH CONNECTOR

Fits quickly and easily connects to flushing machines. It is fitted by simply replacing the filter body with the adapter. The flushing adapter fits the genesis filter with and without valves.

• **CODE: TRAPFLUSH**

KEY FEATURES

- Made from robust brass
- Extra 3rd seal for protection
- Full flow for efficiency
- Maximum 10 bar pressure
- Maximum operating temp 100°C
- 1 year warranty



15MM, 1/2", 3/4" AUTO AIR VENTS

Removes micro bubbles from the system and prevents component damage and system failure, reducing downtime and maintenance costs.

- **CODE: TRAPAVENT15** - 15mm
- **CODE: TRAPAVENT12** - 1/2"
- **CODE: TRAPAVENT34** - 3/4"

KEY FEATURES

- Special valve construction ensures valve is closed completely
- Protects against scale and lime long lasting valve seat
- Robust floats which cannot rupture
- Safety shut off
- Robust brass body
- Works with high temperature and/or high-pressure system environments
- Maximum 10 bar pressure
- Maximum operating temp 110°C
- 1 year warranty

22MM CENTRAVENT DEAERATOR

Works non-stop to effectively remove circulating air and microbubbles from system water. Thanks to the special construction and the solid valve seat, the leak proof air release valve always closes perfectly, this avoids the sputtering and unwanted entry of air from outside the system.

• **CODE: TRAPDEAR**

KEY FEATURES

- Built in slip socket
- Triple radial seal
- Compact installation
- Removes microbubbles
- Lidless unit, no need to replace seal
- Prevents rust
- Maximum 6 bar pressure
- Maximum operating temp 110°C
- 10 year warranty



1/2" WATER SHOCK ARRESTOR MECHANICAL

Maintenance free device to prevent water hammer in plumbing systems. No need to re-pressurize annually. Brass body with polymer piston
• **CODE: TRAPSHOCK12**



KEY FEATURES

- Suitable for potable water, hot, cold and refrigeration circuits
- 1/2" BSP male threaded connection
- Spring loaded
- Maximum 40 bar pressure
- Maximum operating temp 90°C
- 1 year warranty

1/2" WATER SHOCK ARRESTOR DIAGRAMM

When you have a water meter or non-return valve, water shock arrestors are vital to prevent water hammer. With this product having a butyl membrane this is suitable for drinking water.
• **CODE: TRAPSHOCK12/DIA**



KEY FEATURES

- Stainless steel body
- Brass threaded connection
- 100% factory tested
- 0.16 litre capacity
- MIG welded
- Maximum 10 bar pressure
- Maximum operating temp 100°C
- 1 year warranty

POWER HAMMER

The power hammer has been designed to remove debris from the radiator by agitating the radiator via a SDS drill. This is formed using special high intensity rubber.
• **CODE: TRAPHAMMER**

KEY FEATURES

- Saves time
- Doesn't mark the radiator
- No need to use a rubber mallet
- Easily agitated by an SDS drill
- Radiator doesn't need removing to eliminate cold spots



TRAPPEX

COMMERICAL PRODUCTS

1", 1 1/2", 1 1/4"

COMMERCIAL BRASS FILTER

A highly effective, powerful central heating magnetic filter available in 1", 1 1/4" and 1 1/2" for removing both magnetic and non-magnetic dirt particles from the water system. The unique 10000 gauss magnetic field technology guarantees unprecedented fast, optimal dirt separation. Even the smallest magnetite particles are removed, maximising system performance as well as protecting costly system components.

- **CODE: TRAPMAX1** - 1"
- **CODE: TRAPMAX14** - 1 1/4"
- **CODE: TRAPMAX12** - 1 1/2"

KEY FEATURES

- Robust brass body
- Triple radial seal
- Fits at a 50 degree angle
- Compact installation
- Captures magnetic and non-magnetic particles
- Fits horizontal, vertical and at various angles
- Easy clean without disassembly
- 10000 gauss neodymium magnet
- Lidless unit
- No need to replace seal
- Full bore flow
- Maximum 6 bar pressure
- Maximum operating temp 110°C
- 10 year warranty



1/2", 1" & 1 1/2" SCALEMATIC

Scalematic can be used to treat a whole house or can be used to treat specific equipment to prevent scale formation, supplied in a copper housing with BSP ranging from 1/2" to 1 1/2" which can easily be installed into all common plumbing systems. Manufactured in the UK. Scalematic comes backed with a 10 year warranty.

- **CODE: TRAPSCAL12** - 1/2"
- **CODE: TRAPSCAL1** - 1"
- **CODE: TRAPSCAL112** - 1 1/2"

KEY FEATURES

- Protects against scale and lime
- Whole house protection
- No need to replace salt regularly
- Sealed unit, no moving component
- Maximum 16 bar pressure
- Maximum operating temp 110°C
- 10 year warranty



COLLEGES & TRAINING PARTNERS

Educational Discounts Available

ARCTIC HAYES supply the premium pipe freezing range for plumbing and heating engineers!

We are proud to support Colleges & Training Partners across the UK who help inform and inspire the next generation.

Open an account today and start to enjoy educational discounts on our full range of over 450 products and all the benefits below.

ARCTIC HAYES Pipe Freezing

The premium pipe freezing range for plumbing and heating engineers!

Build Pipe Freezing into your syllabus and give your students the skills to save time and money using Pipe Freeze professionally.

Live Product Demonstrations

Live demonstrations ensures your learners not only get to see professional pipe freezing in use, but that they get to ask key technical questions.



Sponsored Bays

Enhance your training bays with branded posters, high quality images and logos.

We can create banners specific to pipe freeze or any other product categories.



For more information please contact:

Niall McGuckin | Business Development Executive

0113 532 8837 | 07939845603 | Niall.McGuckin@arctic-hayes.com

TRAPPEX

**INDUSTRIAL
PRODUCTS**

2" FLOWMATIC INDUSTRIAL FILTER

2" capacity with an automatic air vent for deaeration and a built-in lidless feature to prevent leakages. Made from the finest high grade robust stainless steel and with rustproof 12000 gauss neodymium magnets.

• **CODE: TRAPFLOW2**

KEY FEATURES

- Available in 2 inch to 12 inch
- Robust stainless steel body
- Fits at a 50 degree angle
- Easy clean without disassembly
- 12000 gauss neodymium magnet
- Lidless unit, no need to replace seal
- Maximum 12 bar pressure
- Maximum operating temp 110°C
- 10 year warranty



PRO PIPE FREEZE

PRO FREEZE KIT 8-22MM (1/4" - 3/4")

Our most popular Professional Pipe Freezing Kit, the ZEPRO, contains everything you need to start regularly freezing the most common pipe sizes. Designed for heating and plumbing engineers with dual freeze capability and reusable components.

Freezes 8-22mm (1/4" - 3/4") pipes for up to 45 minutes.

• **CODE: ZEPRO**

KIT CONTAINS

- 1 x PRO Pipe Freezer 600g / 509ml Can
- 2 x 8-15mm (1/4" - 1/2") Freezing Jackets
- 2 x 15-22mm (1/2" - 3/4") Freezing Jackets
- 2 x 1m Nylon Connection Hoses
- 1 x Regulator Valve
- 1 x Digital Dosing Scale
- 1 x Dual Freeze T-Connector
- 1 x User Instructions



ELECTRIC PIPE FREEZE

BENEFITS OF ELECTRIC FREEZE

- **Long-term savings** - no consumable refrigerants
- **Variable voltage** - 110v or 230v machines
- **Flexibility** - freeze 8-61mm pipes
- **Quick results** - freeze pipes in as little as 8 minutes



Scan to view electric range, view technical specifications and watch "HOW-TO-USE" videos.

ELECTRIC FREEZE MINI KIT 8-28MM (1/4" - 1")

The mini is the smallest and most easily portable of the electric freeze kits. Ideal for domestic or large-scale contract and commercial plumbing jobs up to 28mm (1") diameter pipes. Aluminium freeze heads are designed to fit straight onto a 28mm (1") pipes, adding reducers 8-22mm (1/4" - 3/4") to the heads allows the freezing of smaller pipes.

• **CODE: AH28 - 230V - 300W**

KIT CONTAINS

- 4 x clamp head reducers (pairs) 8/10/15 & 22mm
- 1 x pair of cotton gloves
- 1 x 200ml freeze cream
- 2 x Optimum freeze towels
- 2 x Fixing straps
- 1 x User Instructions



ELECTRIC FREEZE DOMESTIC KIT 8-42MM (1/4" - 1 3/4")

The 42mm (1 3/4") is the most popular of the electric freeze kits. Ideal for domestic or large-scale contract and commercial plumbing jobs up to 42mm (1 3/4") diameter pipes. Aluminium freeze heads are designed to fit straight onto a 42mm (1 3/4") pipe, adding reducers 8-35mm (1/4" - 1 1/2") to the heads allows the freezing of smaller pipes.

• **CODE: AH42 - 230V - 400W**

• **CODE: AH42/110 - 110V - 400W**

KIT CONTAINS

- 6 x clamp head reducers (pairs) 8/10/15/22/28 & 35mm
- 1 x pair of cotton gloves
- 1 x 200ml freeze cream
- 2 x Optimum freeze towels
- 2 x Fixing straps
- 1 x User Instructions



ELECTRIC FREEZE INDUSTRIAL KIT 8-61MM (1/4" - 2 1/2")

The largest of our electrical freeze kits, suitable for large scale plumbing jobs and comes equipped to freeze pipes from 8mm to 61mm (1/4" - 2 1/2") to the heads and allows the freezing of smaller pipes.

- CODE: AH61/110 - 110V - 650W
- CODE: AH61/230 - 230V - 650W

KIT CONTAINS

- 8 x clamp head reducers (pairs) 8/10/15/22/28/35/42 & 54mm
- 1 x pair of cotton gloves
- 1 x 200ml freeze cream
- 2 x Optimum freeze towels
- 2 x Fixing straps
- 1 x User Instructions



200ML ELECTRIC FREEZE CREAM

Apply directly to the pipe or freeze heads before starting the freeze to ensure the best contact and best quality freeze.

- CODE: TGS001



KEY FEATURES

- Improve contact and conductivity during freeze
- Suitable for use with all electric freeze kits

FREQUENTLY ASKED QUESTIONS?



Scan to view
FREEZE FREQUENTLY
ASKED QUESTIONS.

SMOKE PRODUCTS

MIXED SMOKE KIT

Smoke products are a vital tool in the heating and ventilation industry. This kit contains a range of smoke products, including smoke matches, pellets, cartridges, smoke sticks & refills.

• **CODE: MSK100**



100 PIECE KIT

DESCRIPTION	QTY	BURN TIME	SMOKE VOLUME
SMOKE MATCHES (CODE: A333000)	25	20 SECONDS	0.75m3
3G WHITE SMOKE CARTRIDGES (CODE: A333003)	10	45 SECONDS	5m3
3G ORANGE SMOKE CARTRIDGES (CODE: A334003)	10	60 SECONDS	5m3
5G WHITE SMOKE PELLETS (CODE: A333005)	6	40 SECONDS	5m3
8G WHITE SMOKE CARTRIDGES (CODE: PH025)	10	60 SECONDS	24m3
9G WHITE SMOKE CARTRIDGES CODE: (A333009)	10	75 SECONDS	8.5m3
9G ORANGE SMOKE CARTRIDGES (CODE: A334009)	10	100 SECONDS	8.5m3
13G WHITE SMOKE PELLETS (CODE: A333013)	8	45 SECONDS	13m3
18G ORANGE SMOKE CARTRIDGES (CODE: A334018)	5	150 SECONDS	17m3
SMOKE PELLET AND MATCH HOLDER (CODE: PHSPHS)	1		
SMOKE MATCH PLUME (CODE: A338000)	1		
SMOKE STICK PEN	1		
SMOKE STICK REFILLS (CODE: A333113)	3		
SMOKE CARRY CASE	1		

AEROSOLS, GREASES & SOLUTIONS

AEROSOL TRIPLE PACK

400ML LEAK DETECTION SPRAY

Specially formulated to trace positive pressure leaks in pipelines and fittings. No need to submerge parts or lines to test.

400ML SILICONE SPRAY

WRAS approved premium grade water repellent silicone spray for use in applications where light lubrication is required.

400ML CRACK-IT

Quickly release seized items in as little as 2 minutes!

The freeze action breaks the corrosion seal and allows the penetrating oil to reach the corroded area.

• **CODE: AEP3**

KIT CONTAINS

- 1 x Leak Detector spray (PH020)
- 1 x Silicone spray (PH040)
- 1 x Crack-it spray (CI/400)



LEAK DETECTOR

Specially formulated to trace positive pressure leaks in pipelines and fittings. No need to submerge parts or lines to test. Non-flammable and non-corrosive, suitable for use on gas, air and nitrogen leaks. The micro-porous foam instantly highlights the smallest of leaks.

KEY FEATURES

- Safe to use in confined areas
- Meets requirements of BS EN 14921:2004



- **CODE: PH026A60** - 60ml atomiser
- **CODE: PH026A** - 250ml atomiser
- **CODE: PH026A5** - 500ml atomiser

- **CODE: PH026M** - 120ml brush on
- **CODE: PH026** - 250ml brush on

CLEAR LEAK DETECTOR

KEY FEATURES

- Safe to use in confined areas
- Non-flammable
- Non - corrosive
- Meets requirements of BS EN 14921:2004



- **CODE: PH027A** - 250ml - With atomiser
- **CODE: PH027B** - 250ml - With brush in cap
- **CODE: PH027A5** - 500ml - With atomiser

PVC PIPE CEMENT

250ml Pipe Cement is a non-drip, thixotropic solvent based pipe cement for use with non-pressure PVC and ABS thermoplastic pipes and conduits.

• **CODE: PVCC250**

KEY FEATURES

- Can be used in low and high temperature soil and waste pipework
- 12 month self-life.



ANTI-SEIZE GREASE

Designed for use on all static fasteners, bolts, flanges, metal interfaces and other mechanisms prone to seizure. Applying when assembling helps prevent corrosion. Apply a thin film onto dust free, clean surface.

• **CODE: ASG50**

KEY FEATURES

- WRAS Approved
- Prevents Corrosion
- Prevents mechanical seizure



BOOST YOUR SALES & MARGINS

High Margin, Fast Moving Product Lines

- Display **best-selling** Arctic Hayes tools and consumables for the heating and plumbing market on a high quality durable light up **display stand**.
- **High-quality**, engaging and colourful point of sale display stands can have a huge impact on sales figures.
- Make the **right impression**, drive impulse purchases and grab customers attention!
- **Risk-free!** Regular stock reviews and the ability to swap non-moving stock for new lines.
- Initial Stock Order **Support** Available.



Wall Panel
Size: 600mm x 1100mm

Medium-Small Stand
Size: 800mm x 1500mm

Medium-Tall Stand
Size: 660mm x 2000mm

Tall Stand
Size: 1000mm x 2000mm

SOLDERING & BRAZING KITS

VORTEX SOLDERING HOT BAGS

Essential kits for the everyday plumber or experienced DIYer. An all-in-one solution to your soldering and brazing needs. Come ready to use in a stylish multi pocket bag (also available separately).

KIT CONTAINS

- 1 x VORTEXBAG1 - Vortex bag
- 1 x VPRO - Vortex Pro torch
- 2 x VG1 - Vortex Map-X gas



• CODE: VBKIT1



KIT CONTAINS

- 1 x VORTEXBAG1 - Vortex bag
- 1 x VSM1 - Solder mat
- 1 x VPRO - Vortex Pro torch
- 1 x VG1 - Vortex Map-X gas
- 1 x 443001 - 15mm Pipe cutter
- 1 x 443002 - 22mm Pipe cutter

• CODE: VBKIT3



KIT CONTAINS

- 1 x ATBG1 - 15" Tool bag
- 1 x VSM1 - Solder mat
- 1 x VPRO - Vortex Pro torch
- 1 x 443001 - 15mm Pipe cutter
- 1 x 443002 - 22mm Pipe cutter
- 1 x VG1 - Vortex Map-X gas

• CODE: HOTBAGK1



KIT CONTAINS

- 1 x VORTEXBAG1 - Vortex bag
- 1 x VSM1 - Solder mat
- 1 x VPRO - Vortex Pro torch
- 1 x VG1 - Vortex Map-X gas

• CODE: VBKIT5



KIT CONTAINS

- 1 x ATBG1 - 15" Tool bag
- 1 x VSM1 - Solder mat
- 1 x VPRO - Vortex Pro torch
- 1 x VG2 - Vortex Propane gas
- 1 x 662102 - Abrasive carbide roll
- 1 x WM1 - 1200mm x 750mm Work mat
- 1 x 443001 - 15mm Pipe cutter

• CODE: HOTBAGK4

SERVICING TOOLS & ESSENTIALS



6-38MM DEBURRER

The Arctic Hayes deburring tool quickly and neatly deburrs internal/external pipes 6- 38mm. For use on plastic, copper, aluminium and brass pipes.

• **CODE: DEBURR**

KEY FEATURES

- Internal/External deburring tool
- Zinc alloy cutting blades
- Ergonomic design
- Quick and efficient
- Robust PP outer



PROFESSIONAL PIPE BENDER

This high-quality professional pipe bender is perfect for both 15 and 22mm copper & light grade stainless steel pipes. Create ripple free and precise bends with this heavy duty and durable professional tool.

• **CODE: PB1522**

KEY FEATURES

- Supplied with 15 & 22mm aluminium die cast formers
- Non-slip handle is comfortable to grip and operate
- Widely used in plumbing, air conditioning, ventilation systems, automotive heating systems and more.



PROFESSIONAL MINI PIPE BENDER

Made from durable aluminium. With its ergonomic handle design, it accurately bends 6, 8 & 10mm pipes up to 180°.

• **CODE: PB6810**

KEY FEATURES

- 3-in-1 180° pipe bender
- Create ripple-free precise bends
- Widely used in plumbing, air conditioning, ventilation systems, automotive heating systems and more.



EASI BLEED DRAINING VALVE

A simple solution for broken radiator bleed valves. It can be used on any radiator. You do not need to drill any pilot holes in the radiator as the product is designed to self drill into the radiator wall.

• **CODE: AHEB2**



2 PACK!



Scan to view technical specifications and watch 'How-To' video!

PRESSURE SERVICE KIT

All the kit you need for carrying out servicing on pressure vessels.

• **CODE: PSK22**

KIT CONTAINS

- 1 x Schrader core removal tool
- 1 x Specialist core removal tool
- 10 x Schrader cores
- 10 x Dust caps



50M GAS ID TAPE

This gas pipeline identification tape is printed with the basic identification colours as emphasised by Health & Safety Regulations. Should be applied to any gas installation.

• **CODE: A662030-50M** - 50mm x 50m

**SAME COST
50% MORE**



WORK IN PROGRESS DOOR BARRIER

Place across doorways to stop people entering whilst work is being carried out. Spring loaded for added tension.

Safety sign measures 450mm x 450mm.

- **CODE: WIP1** (rod and safety sign)
- **CODE: DWBRODS-12** (replacement rod)
- **CODE: WIPS** (safety sign only)

**ADJUSTABLE
550MM - 900MM**



15 & 22MM KNOCK IN CLIPS

High quality zinc plated nails ideal for knocking into all materials, Masonry, Timber and plastic surfaces. Suitable for 15mm or 22mm copper, pvc and plastic pipes. No drilling required

- **CODE: KNOCK15** - 15mm
- **CODE: KNOCK22** - 22mm

100 PACK!



TEMPERATURE TESTING

IR99 3-IN-1 THERMOMETER

The IR-99 3-in-1 thermometer is a clamp thermometer, infrared thermometer and stem thermometer, all in one instrument.

• **CODE: A998724**

KEY FEATURES

- User selectable °C or °F
- Clamp opening approx 1" (25mm)
- Response time less than 1 second
- Maximum and minimum record, data hold and automatic power off
- IR temperature resolution 0.1°C/°F
- Optical resolution: 1:1
- Resolution 0.1°C/°F
- Basic accuracy 2% of reading
- Batteries included

IR temperature range: -35°C to +260°C (-31°F to 500°F)
Probe temperature range: -40°C to +260°C (-40°F to 500°F)



STEM THERMOMETER

A simple to use thermometer ideal for testing liquids, semi-solid and solid materials.

• **CODE: AH02**

KEY FEATURES

- Max Min and Hold Function
- Select °C or °F
- 145mm x 4mm probe length
- Probe protective sheath
- Battery included
- Conforms to EMC and RoHS Directive
- CE and UKCA Compliant

Temperature range: -55°C ~ 330°C (-58°F ~ 626°F)



COMPACT DIGITAL THERMOMETER

Combines a modern compact design effective device for liquids, semi-solids and solids.

• CODE: AHCT1

KEY FEATURES

- Shows Max and Min reading
- Select °C or °F
- Programmable audible alarm at high and low temperature limits
- 100mm x 3.5mm probe length
- Battery included
- Conforms to EMC and RoHS Directive
- CE and UKCA Compliant



Temperature range: -50°C ~ 150°C (-58°F ~ 302°F)

NON-CONTACT INFRARED DIGITAL THERMOMETER

Perfect for measuring the temperature of hard to reach objects. Unique 12 point circular measurement area allows clear and accurate readings. Supplied in a protective carry case.

• CODE: AH650

KEY FEATURES

- Laser target pointer
- Colourful LCD display for easy read
- Adjustable upper and low limit alarm
- Data hold function
- Max function
- D:S 12-1 (distance to spot ratio)
- Automatic power off function
- Batteries included
- Conforms to EMC and RoHS Directive
- EN60825 compliant for laser
- CE and UKCA Compliant



Temperature range: -30°C ~ 380°C (-22°F ~ 716°F)

DIFFERENTIAL THERMOMETER DUAL INPUT KIT 1

Provides engineers with everything needed to accurately measure temperatures. The kit has been designed to be a useful tool for gas, heating and plumbing professionals. Ideal for flow and return differential for balancing radiators as well as cold water inlet and hot water outlet temperatures.

• **CODE: AHKT1**



Temperature range:

- K-Type: -200°C ~ 1370°C (-328°F ~ 2498°F)
- J-Type: -200°C ~ 1100°C (-328°F ~ 2012°F)

KIT CONTAINS

KEY FEATURES

- Records max, min and average
- Data hold
- 2 x K / J Type ports
- Probes and Thermocouples meet EN 60584
- Battery included
- Conforms to EMC and RoHS Directive
- CE and UKCA Compliant



1 x Differential thermometer dual input



1 x Robust Case & Batteries included



1 x Surface temperature probe



1 x Air & liquid temperature probe



2 x 1M K-Type thermocouple wires



2 x Pipe clamp temperature probes

DIFFERENTIAL THERMOMETER DUAL INPUT KIT 2

Provides engineers with everything needed to accurately measure temperatures. The kit has been designed to be a useful tool for gas, heating and plumbing professionals. Ideal for flow and return temperature differential when balancing radiators.

• **CODE: AHKT2**



KEY FEATURES

- Records max, min and average
- Data hold
- 2 x K / J Type ports
- Thermocouples meet EN 60584
- Battery included
- Conforms to EMC and RoHS Directive
- CE and UKCA Compliant

KIT CONTAINS

- 1 x Dual input thermometer
- 2 x Pipe clamp temperature probes
- 2 x 1M K-Type thermocouple wires
- 1 x Protective carry case
- Batteries included



Temperature range:

- K-Type: -200°C ~ 1370°C (-328°F ~ 2498°F)
- J-Type: -200°C ~ 1100°C (-328°F ~ 2012°F)

DIFFERENTIAL THERMOMETER DUAL INPUT

Delivers a fast response reading and covers a wide range of temperature range. Takes the temperature measurement in most heating, ventilation, cold storage and air conditioning applications.

• **CODE: AHTH**

KEY FEATURES

- Max Min and Average Function
- Data Hold
- Select °C or °F
- 2 x K / J Type ports
- Includes 2 x 1m K-Type Thermocouples
- Battery included
- Conforms to EMC and RoHS Directive
- CE and UKCA Compliant
- Comes with protective carry case



Temperature range:

- K-Type: -200°C ~ 1370°C (-328°F ~ 2498°F)
- J-Type: -200°C ~ 1100°C (-328°F ~ 2012°F)



K-TYPE AIR & LIQUID TEMP PROBE

Measure both air and liquid temperature including water, oils, detergents, semi-solids and non toxic chemicals.

• **CODE: TPA1**

KEY FEATURES

- Exposed thermocouple bead, covered by a perforated stainless steel probe allowing the free passage of air and liquid
- Can be used with any K-Type thermometer or multimeter
- Compliance: BS EN60584-1, BS EN60584-3
- 100mm probe length, 5mm diameter
- 1m Curly cable
- RoHS compliant

Temperature range: -40°C ~ 250°C (-40°F ~ 482°F)



K-TYPE SURFACE TEMP PROBE

Measure temperature of radiators, hot plates and pipes and ideal for temperature measurements on all flat surfaces.

• **CODE: TPS1**

KEY FEATURES

- 15mm Spring loaded thermocouple tip
- Can be used with any K-Type thermometer or multimeter
- Compliance: BS EN60584-1, BS EN60584-3
- 100mm probe length, 5mm diameter
- 1m Curly cable
- RoHS compliant

Temperature range: -40°C ~ 600°C (-40°F ~ 1112°F)



K-TYPE PIPE CLAMP TEMP PROBE

Ideal for checking the flow and return temperature differential when balancing radiators.

• **CODE: TPPC1**

KEY FEATURES

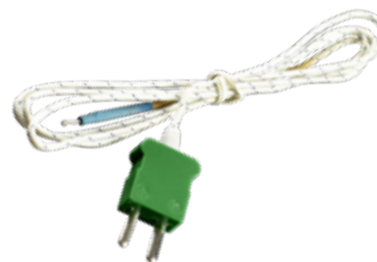
- Quick response plates suitable for 4-40mm dia pipes
- Spring load jaw for secure grip
- Can be used with any K-Type thermometer or multimeter
- Compliance: BS EN60584-1, BS EN60584-3
- Cable length 1m
- RoHS compliant

Temperature range: -40°C ~ 100°C (-40°F ~ 212°F)

1M K-TYPE THERMOCOUPLE

KEY FEATURES

- Measure air & liquid temperature
- Use with any K-Type compatible thermometer or multimeter
- **CODE: TC1**



K-TYPE VELCRO STRAP PROBE

KEY FEATURES

- 320mm x 20mm Velcro strap
- 2 metre long lead
- Maximum temperature: 150°C
- **CODE: A8125**



GAS & PRESSURE TESTING

GAS LEAK DETECTOR

Used to identify the presence of combustible gases such as natural gas, methane, propane, butane and ammonia in appliances, valves, pipes and fittings. As the sensor interacts with gases, the unit immediately indicates to the user that combustible gases are present which helps to quickly locate the source of leak.

• **CODE: AH61**



KEY FEATURES

- Detects between 50ppm to 1000ppm
- High/Low sensitivity setting
- Audible and visual alarm
- Auto power off
- Operating conditions: 0°C ~ 50°C (32°F ~ 122°F) 20 to 80% RH
- Batteries included
- Conforms to EMC and RoHS Directive
- CE and UKCA Compliant

DIGITAL PRESSURE VESSEL CHECKER

Ideal to check pressures in expansion pressure vessels within heating systems. Ideal size for plumbing use with an accurate gauge that gives readings in PSI, kPa, and BAR.

• **CODE: AHTP5**

KEY FEATURES

- Range: 5-100 PSI
- Accuracy: $\pm(1\% + 0.5)$ PSI
- Peak & Hold function
- LED light tip helps you find the valve easily
- Auto power off
- PSI, kPa & BAR
- Battery included



ELECTRICAL TESTING

NON-CONTACT VOLTAGE DETECTOR

Professional easy to use volt detector, designed to detect AC voltage from 12V - 1000V. When probe is placed near the AC voltage the signal indicator will flash red and beeper will sound.

• **CODE: AH12**

KEY FEATURES

- Double insulated for safety around live circuitry
- Range: 12V ~ 1000V AC / 48V ~ 1000V AC 50/60Hz
- Operating conditions: 0°C ~ 40°C (32°F ~ 104°F)
- Compliance: CATIII 1000V EN61010-1
- Audible and visual alarm
- Distinguish between Live and Neutral
- Batteries included
- Conforms to LVD, EMC and RoHS Directive
- CE and UKCA Compliant



NON-CONTACT ATEX VOLTAGE DETECTOR

Arctic Hayes ATEX approved non-contact AC Voltage Detector is easy to use. Just touch the tip against a terminal strip, outlet or supply cord and the tester will indicate if voltage is present.

Voltage detection is indicated by both visual and audible, multicolour LED's. The flash and beep rate increase the closer you get to the voltage source.

As well as general use this ATEX certified version is approved for use in hazardous areas such as chemical plants, oil refineries and offshore rigs as well as gas / explosive environments.

• **CODE: AHATEX12**



**ATEX
CERTIFIED!**



TECHNICAL INFORMATION!

- Range:
12V to 1000V
100V to 1000V
- Frequency:
50Hz / 60Hz
- Compliance:
CAT IV 1000V rated IP67 rated
2m drop-proof rated ATEX certified
(II 2 G Ex ib IIB T4)
- Power Supply:
2 x 1.5V AAA batteries (included)

PROFESSIONAL DIGITAL MULTIMETER

Easy to use clamp meter with a large trigger jaw and rotary dial makes adjusting between features simple. Can be used to measure current up to 600A AC and voltage up to 600V AC.

• **CODE: AH206**

KEY FEATURES

- LCD display
- Double colour backlight
- Sleep, data holding, overload protection
- Measure current up to 600A AC
- 6000 counts true RMS
- Comes with protective pouch
- Batteries included



FUSED MULTIMETER TEST LEADS

Fully compliant fuse leads which conform to the requirements of EN61010 and HSE GS38 regulations.

• **CODE: A998780**



PROFESSIONAL DIGITAL MULTIMETER

WITH TEMPERATURE FUNCTION

A high-performing, auto-ranging multimeter with temperature function. The device can measure voltage, electrical current, resistance and capacitance.

• CODE: AH118

KEY FEATURES

- Input jack LED indication
- Hold, max and backlight function
- Built in flashlight
- CATIII 1000V, CATIV 600V
- Supplied with test and K-type leads
- Comes with protective pouch
- Batteries included



COMPACT DIGITAL MULTIMETER

WITH TEMPERATURE FUNCTION

A high-performing, auto-ranging multimeter with temperature function. This device can measure voltage, electrical current, resistance, capacitance as well as measuring NCV.

• CODE: AH113

KEY FEATURES

- Hold, max and backlight function
- Built in flashlight
- 6000 Counts true RMS
- CATIII 600V
- Supplied with test and K-type leads
- Temperature function
- Comes with protective pouch
- Batteries included



CLEANING PRODUCTS

HEAVY DUTY WIPE & REFILL

These new Anti-Bacterial 'Quad Fabric' Wipes have increased strength and greater absorbency.

- **CODE: ABWIPES** - Tub of 80
- **CODE: ABWIPES-REFILL** - 80 wipe refill



KEY FEATURES

- The abrasive side removes the most stubborn and dried-on dirt
- The smooth side soaks up any excess, leaving no mess
- Dermatologically tested
- Biodegradable



21" x 29" RUBBLE SACKS

Keep on top of your waste management with our heavy duty black rubble sacks. Say goodbye to the splitting and stretching of cheaper variations on the market. Ideal for both domestic and commercial use. Suitable for all types of rubbish – brick, block, timber, plaster, gravel – our rubble sacks are robust enough to carry the lot. Wash and reuse over and over again.

• **CODE: BRS1**



KEY FEATURES

- Heavy duty
- Hold up to 60 Litre / 20kg
- 350 gauge
- 87.5 Micron
- 500mm x 760mm
- 10 bags per roll



CHECK OUT OUR WEBSITE!

With over 450 products available

Find out Frequently Asked Questions

News, reviews and information

NEW Freeze Selector, which freeze is best for you!

Partnership opportunities

Product images

Download safety data sheets

Watch how-to-use videos

Full product information

www.arctic-hayes.com

ARCTIC HAYES



www.arctic-hayes.com | Call us on: +44(0)113 271 5245
9 Millshaw Park Ave, Leeds, LS11 0LR