

TRAPPEX

22 & 28mm CENTRAMAG NYLON FILTERS

INSTALLATION & SERVICING
INSTRUCTIONS.

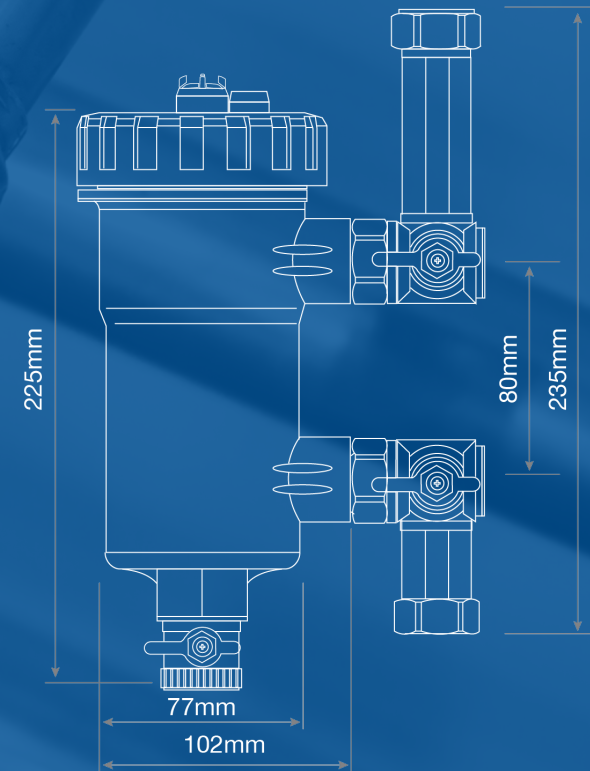
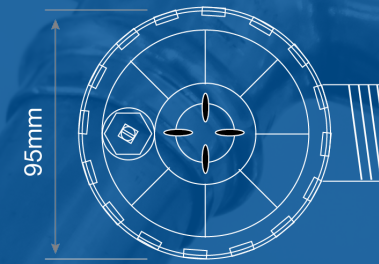
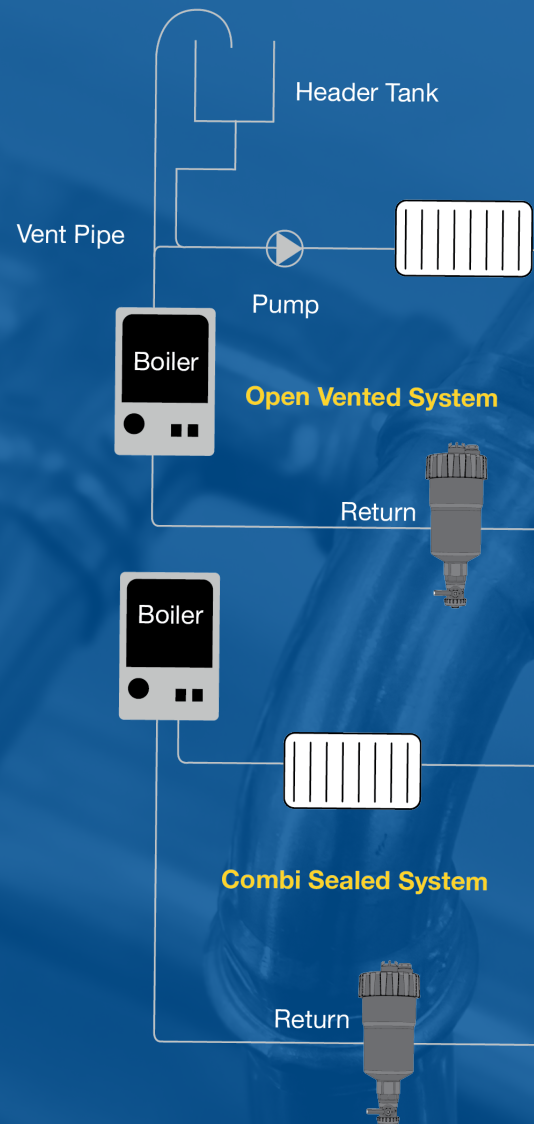


OVERVIEW

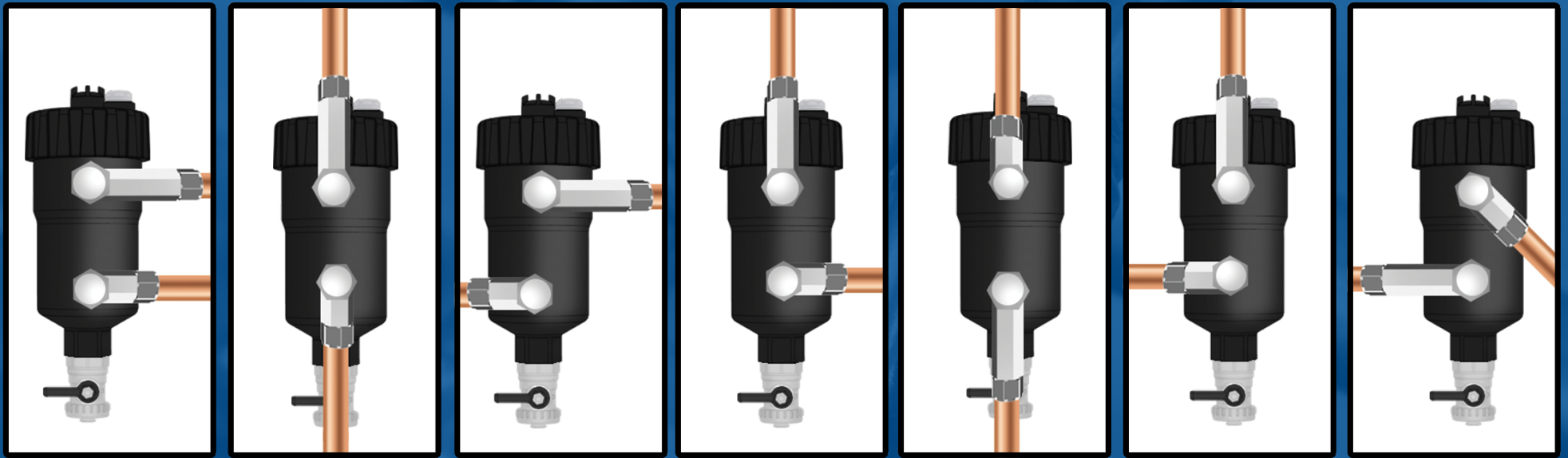
Works as a dual filter, maximising the life expectancy of your boiler whilst maintaining fuel efficiency.

Made for all types of heating systems. To achieve optimum protection for your boiler, we recommend that Centramag is fitted on the return pipework after the last radiator and as close to the boiler as is practicable. It is important that you ensure adequate access for servicing when choosing where to locate the Centramag filter.

The following instructions should be followed at all times to ensure the installation is carried out safely.



INSTALLATION OPTIONS

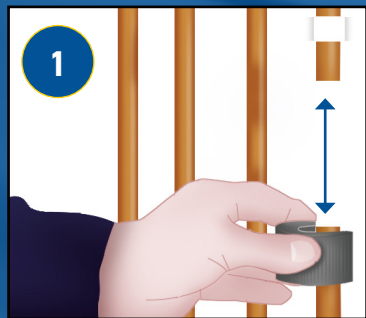


Suitable for all central heating systems. In order to achieve the best results and protection for your boiler. It is recommended that Centramag is fitted after the last radiator before the boiler. It is important that you ensure adequate access for servicing when choosing the location of your Centramag filter.

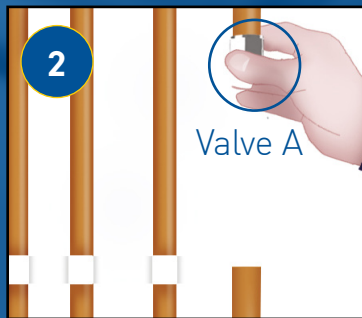
INSTALLATION

Fitting and servicing of the Centramag filters should be carried out by a competent person.

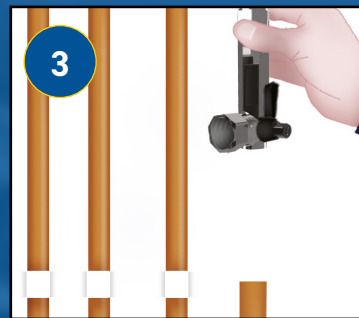
Removes magnetic and non-magnetic particles. Good practice is to always fit this on the return pipe after the last radiator and as close to the boiler as is practicable.



1 Cut & remove 115mm of pipe work.



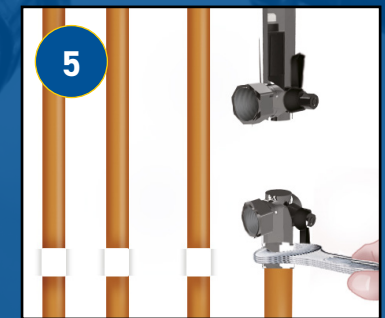
2 Slip on nut and olive to Valve (A).



3 Connect Valve (A) to the nut and olive.



4 Slip on nut and olive to Valve (B).



5 Connect Valve (B) to the nut and olive, tighten with spanner.



6 Line up inlet and outlet ports to the valves and tighten both with a spanner.



7 Finally tighten Valve (B) with a spanner.



8 Remove filter out of the canister.



9 Pour inhibitor into the canister.



10 Tighten lid with the spanner provided and open the valves. Finally open the bleed valve to eliminate any air in the system.

Flow can be in any port as it has been designed with a bi-directional flow.

DOSING CHEMICALS

Dosing is made easy without disassembly to the Centramag filter. Simply remove the bleed valve and pour in the inhibitor.



Close the service valves using the Centramag spanner. Open the drain valve and allow the filter chamber to empty. Close the drain valve.



Shut off the drain valve after draining. Remove bleed valve completely.



Pour inhibitor in via a funnel and replace with the bleed valve.



Open the service valves and open the bleed valve to eliminate any air from the system.

CAUTION:

Dispose of any unused product and empty containers in accordance with guidance from your local waste regulations. Make sure all electrical power to the central heating system is turned off whenever working on the Centramag filters.

Drain the central heating systems before fitting the Centramag filters.

Fitting and servicing of the Centramag filters should be carried out by a competent person.

If you have a pacemaker fitted you need to take caution, as the filter contains a very strong magnet.

SERVICING OPTION 1 - FAST CLEAN

Replacement O-rings and other parts for the Centramag filters can be purchased via our website www.arctic-hayes.com or www.sales@arctic-hayes.com.



1 Close both service valves, remove the magnet and open bleed valve to relieve the pressure.



2 Open the drain valve, after 30 seconds open the top valve nearest to the boiler to release any loose magnetite and close the drain valve.



3 Once the Centramag filter has been serviced, shut the drain valve and open the service valves, open the bleed valve to eliminate any air in the system, also re-pressurize the boiler before operating.

SERVICING OPTION 2 - MANUAL CLEAN



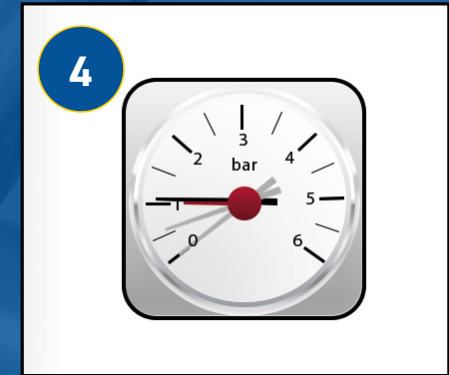
1 Close both service valves, remove the magnet, open the bleed valve and open the drain valve to drain the Centramag filter.



2 Open the lid with the spanner provided. Supporting the Centramag filter with your other hand, remove the inner filter and clean manually



3 Replace the inner filter and fit a new O-ring. Replace the magnet, close the drain valve and open both service valves. Open the bleed valve to eliminate any air in the system



4 Re-pressurize boiler to the correct pressure.

CAUTION:

Always turn boiler off when servicing or fitting the Centramag filter. Servicing is recommended annually.