

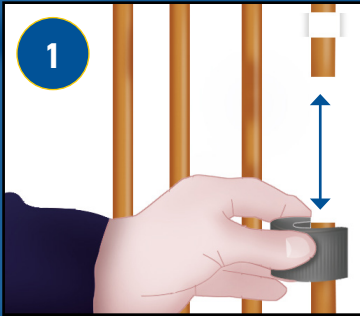
TRAPPEX

22mm GENESIS BRASS FILTER

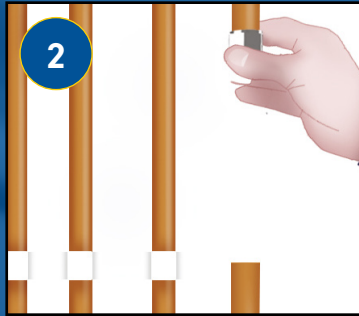
INSTALLATION & SERVICING
INSTRUCTIONS.



INSTALLATION



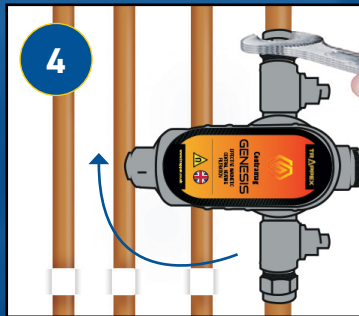
Cut 140mm of pipework.



Slip on nut and olive on both sides.



Slip filter onto pipe and slide down.

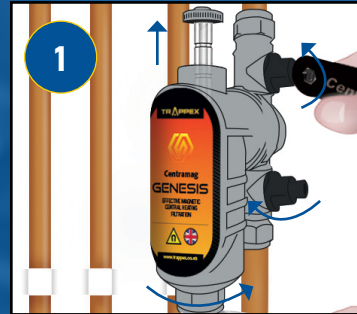


Once slid on, turn filter to right angle so you can tighten nuts.



Straighten the filter and tighten the collar.

EASY CLEAN & DOSING



Isolate both valves, remove magnet, open drain plug and drain.



Momentarily open the top isolating valve and drain any magnetite in the filter.



Replace magnet and turn it 180 degrees. Re-tighten collar.



Pour in central heating inhibitor.



Put the plug back on.



Return filter back to original position.